

ANNE PRO 2 User Manual

The ANNE PRO 2 is a "60%" mechanical keyboard that is equipped with RGB LED lighting, Bluetooth connectivity and a built-in battery.

The ANNE 2 PRO is smart and it saves on desk space.

It's compact 61-key layout can be used like a standard 104-key board thanks to key combinations that function by default and /or are programmable via software.

1. Basic Function

The key marked **FN** is referred to as **FN1** in your Quick Start Guide, in the software and elsewhere.

The key to the right of **FN1** on your keyboard (3 horizontal bars) is designated **FN2**.

The **CapsLock** key can be programmed to act as an additional **FN1** or **FN2** key via software.

1.1 Connect your ANNE PRO 2

1.1.1 Connect via USB Cable



Steps:

1. Set the (Bluetooth) switch on the back of the keyboard to the OFF position.
2. Connect the keyboard to your computer using the supplied (USB-C to USB) cable.

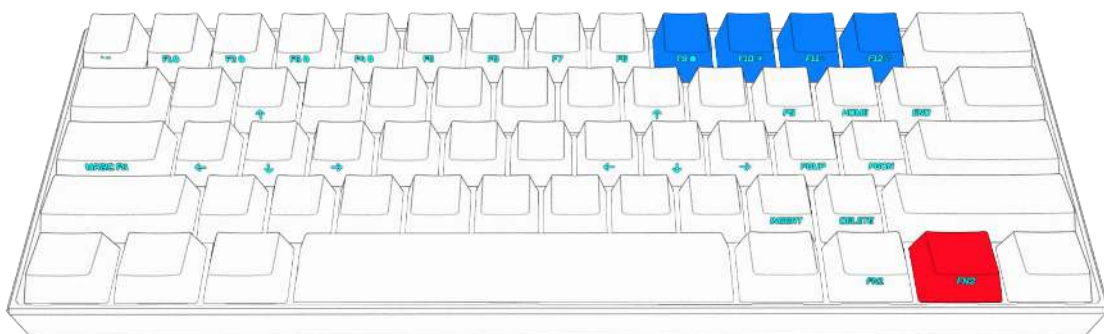
1.1.2 Connect via Bluetooth

1. Set the (Bluetooth) switch on the back of the keyboard to the ON position.
2. Refer to Chapter 4 for connection procedure.

1.2 Light Control

Your ANNE PRO 2 allows you to preset a variety of lighting effects.

Please refer to the ObinsKit User Manuals for [Light Setting](#) to see the options.



$\boxed{\text{FN2}} + \boxed{9} = \text{Toggle preset lighting effects (see software for custom settings)}$

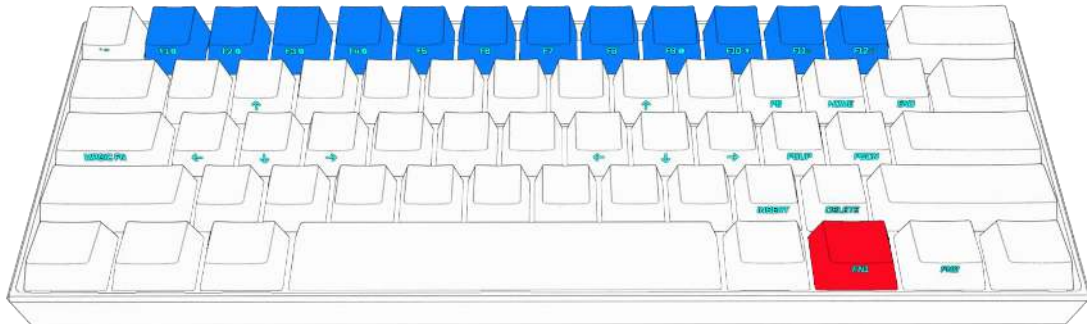
$\boxed{\text{FN2}} + \boxed{0} = \text{Turn lighting ON / OFF}$

$\boxed{\text{FN2}} + \boxed{-} = \text{Reduce brightness}$

$\boxed{\text{FN2}} + \boxed{+} = \text{Increase brightness}$

1.3 F1 ~ F12

Your ANNE PRO 2 provides access to Function Keys via the following key combinations (using the **FN** key at the bottom right of the keyboard)



$$\boxed{\text{Fn1}} + \boxed{1} = \boxed{\text{F1}}$$

$$\boxed{\text{Fn1}} + \boxed{2} = \boxed{\text{F2}}$$

$$\boxed{\text{Fn1}} + \boxed{3} = \boxed{\text{F3}}$$

$$\boxed{\text{Fn1}} + \boxed{4} = \boxed{\text{F4}}$$

$$\boxed{\text{Fn1}} + \boxed{5} = \boxed{\text{F5}}$$

$$\boxed{\text{Fn1}} + \boxed{6} = \boxed{\text{F6}}$$

$$\boxed{\text{Fn1}} + \boxed{7} = \boxed{\text{F7}}$$

$$\boxed{\text{Fn1}} + \boxed{8} = \boxed{\text{F8}}$$

$$\boxed{\text{Fn1}} + \boxed{9} = \boxed{\text{F9}}$$

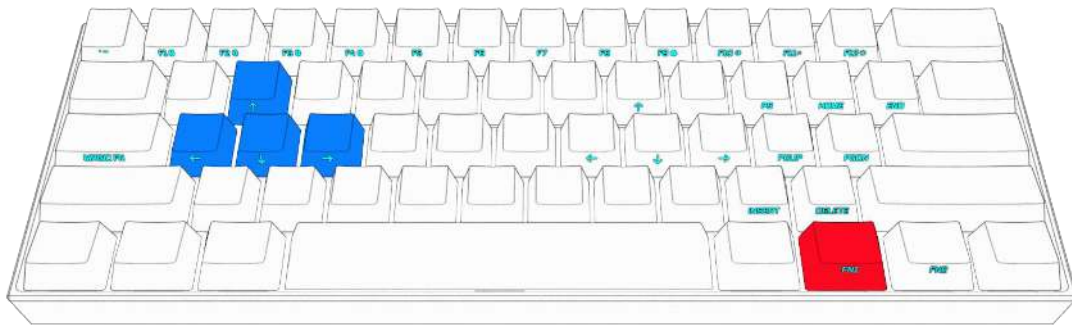
$$\boxed{\text{Fn1}} + \boxed{0} = \boxed{\text{F10}}$$

$$\boxed{\text{Fn1}} + \boxed{-} = \boxed{\text{F11}}$$

$$\boxed{\text{Fn1}} + \boxed{+} = \boxed{\text{F12}}$$

1.4 Direction Keys

ANNE PRO 2 provide two groups of direction keys



$\text{Fn1} + \text{W} = \uparrow$

$\text{Fn1} + \text{A} = \leftarrow$

$\text{Fn1} + \text{S} = \downarrow$

$\text{Fn1} + \text{D} = \rightarrow$

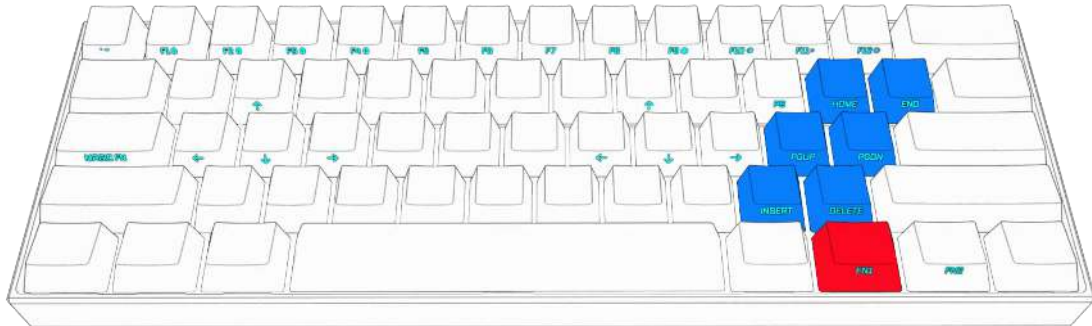
$\text{Fn1} + \text{I} = \uparrow$

$\text{Fn1} + \text{J} = \leftarrow$

$\text{Fn1} + \text{K} = \downarrow$

$\text{Fn1} + \text{L} = \rightarrow$

1.5 Other Keys



FN1 + O = SCROOL LOCK

FN1 + P = PAUSE BREAK

FN1 + | = PRINT SCREEN

FN1 + ; = PAGE UP

FN1 + ' = PAGE DOWN

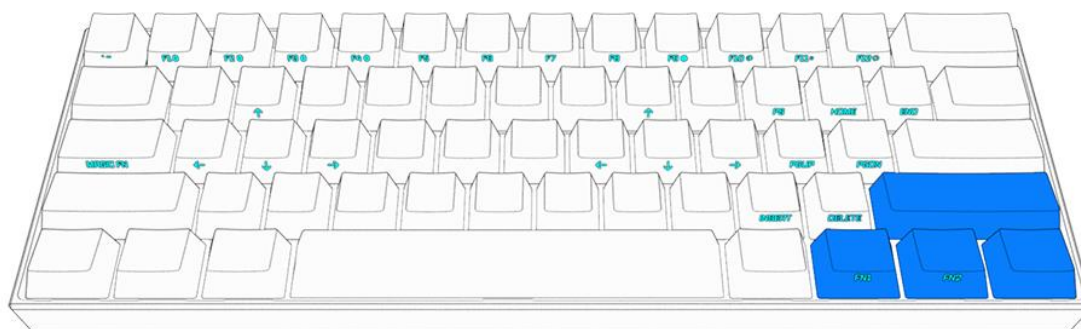
FN1 + .> = INSERT

FN1 + /? = DELETE

FN1 + [{ = HOME

FN1 +]} = END

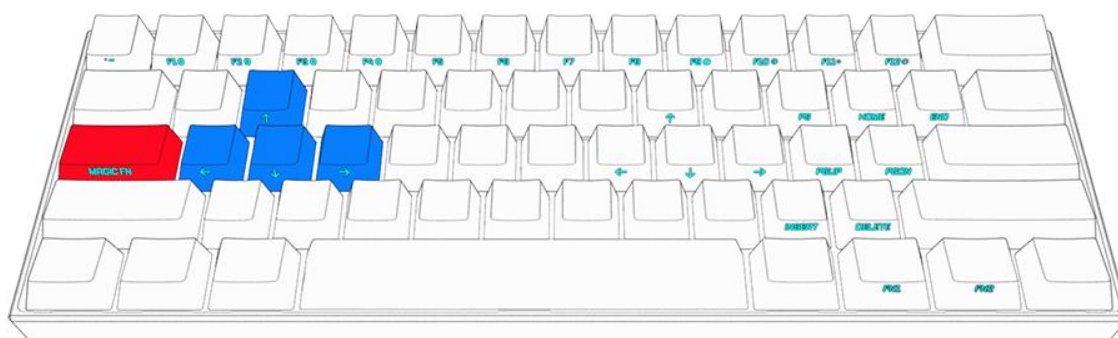
1.6 TAP Layout



Your ANNE PRO 2 provides you with a third set of (non-repeating) direction keys via the "TAP" function (which is controlled via the software).

This allows you to tap **Right Shift** for **↑**, **FN1** for **←**, **FN2** for **↓** and **Right Control** for **→**. (You may assign other functions to your TAP keys via the software. See the "TAP" layer in the [Layout Settings](#) section for your keyboard.)

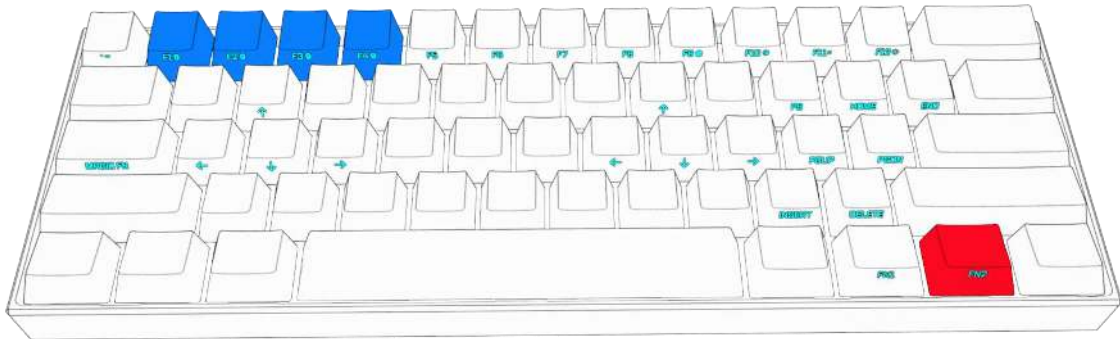
1.7 Magic Fn



Magic FN allows your **CapsLock** key to act as **FN1** or **FN2**. To enable this function, please see the [Keyboard Setting](#) section of this manual.

2. Bluetooth Setup

Before proceeding, make sure the switch under your keyboard is set to ON.



2.1 Turn on Bluetooth broadcast

To function wirelessly, your ANNE PRO 2 must be paired with a host that is equipped with Bluetooth (computer, phone, tablet, etc.).

You may program the keyboard to connect with up to 4 hosts.

FN2 + **1** (5 Seconds) = Turn on Bluetooth broadcast on position 1

FN2 + **2** (5 Seconds) = Turn on Bluetooth broadcast on position 2

FN2 + **3** (5 Seconds) = Turn on Bluetooth broadcast on position 3

FN2 + **4** (5 Seconds) = Turn on Bluetooth broadcast on position 4

2.2 Switch Host

Connect or switch ANNE PRO 2 to a paired host

FN2 + **1** = Switch to host saved on position 1

FN2 + **2** = Switch to host saved on position 2

FN2 + **3** = Switch to host saved on position 3

FN2 + **4** = Switch to host saved on position 4

2.3 Bluetooth pairing with Windows 8/10

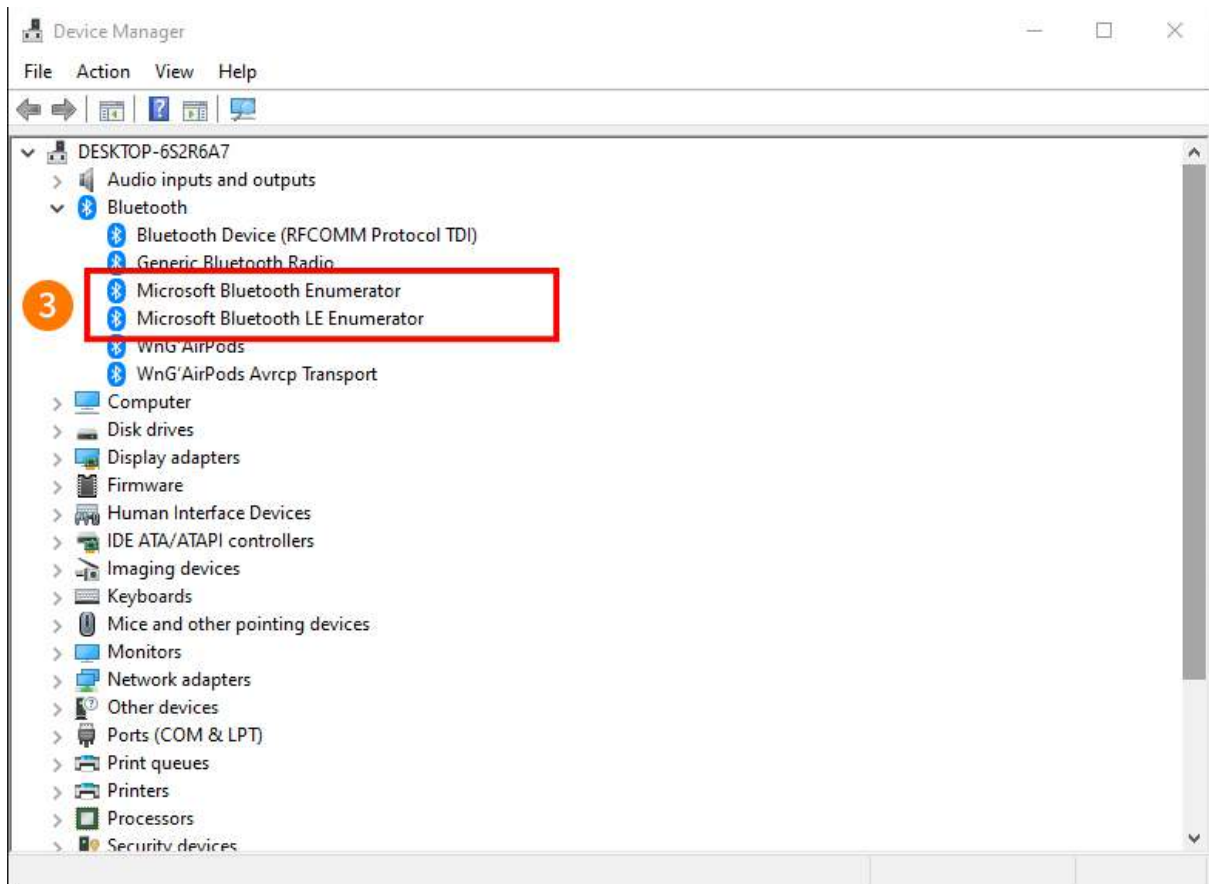
2.3.1 Make sure your computer or other device supports Bluetooth Low Energy (BLE).

If your device does not support BLE, please purchase an adapter that supports BLE 4.0.



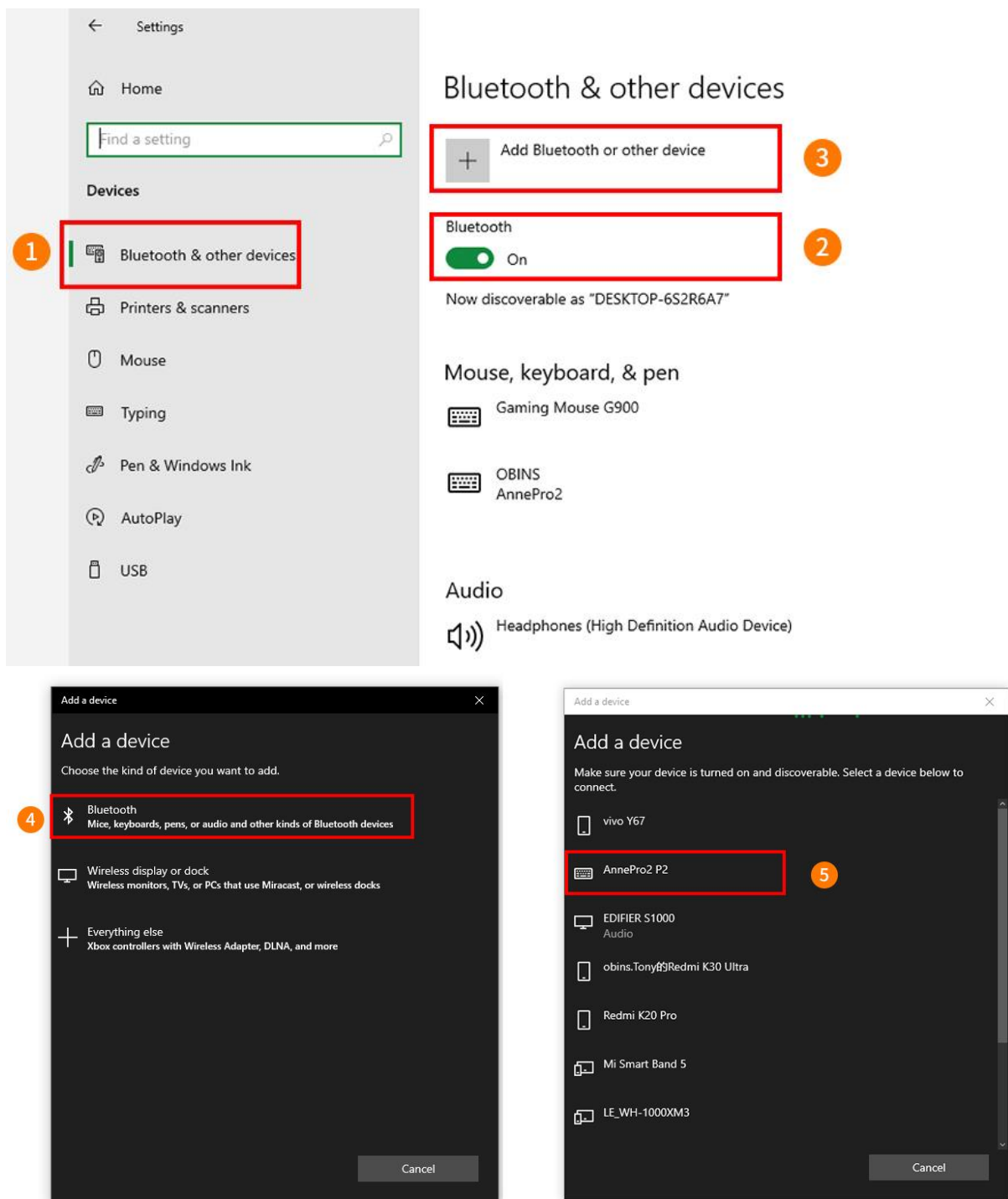
2

1



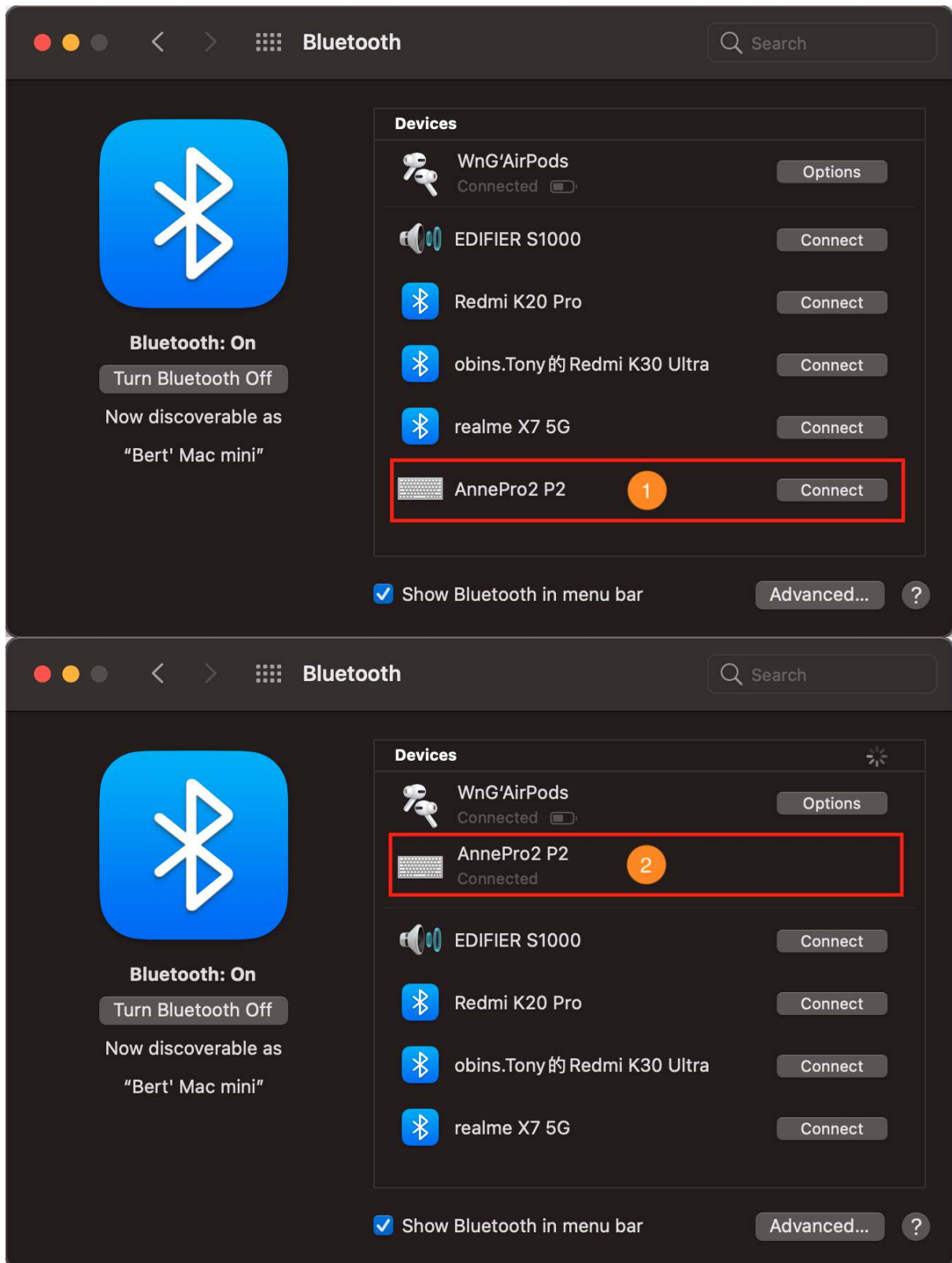
1. Right click on the windows icon at the bottom left of your desktop
2. Select Device Manager
3. If you see Microsoft Bluetooth Enumerator in the list of devices in the window, your computer supports BLE. Otherwise, you require an adapter that supports BLE 4.0.

2.3.2 Pair your Windows computer to function wirelessly with your ANNE PRO 2



1. Right click on the `Windows` icon at the bottom left of your desktop - select `Settings` - select `Devices` - select `Bluetooth & other devices`
2. Turn `Bluetooth` ON
3. Click `Add Bluetooth or other device`
4. Click `Bluetooth`
5. Select `AnnePro2` - wait 5 to 10 seconds for the binding / pairing to complete

2.4 Bluetooth pairing with Mac OS X



1. Open Bluetooth setting window, click `Connect` button to pair with AnnePro2
2. `Connected` is displayed on success

3. Technical Parameters

Item	Parameters
Wired	USB (Windows 7/8/10、 Mac、 Linux)
Wireless	Bluetooth LE 4.0 (Windows 8/10、 Mac、 Linux)
Size	97 × 284 × 40mm
Weight	635g
Battery	1900mAh
USB Input Voltage	5V DC
USB Working Current	500mA Max
Screw	Torx T5 M2*9.5mm